

Statistical Fact Sheet — Miscellaneous

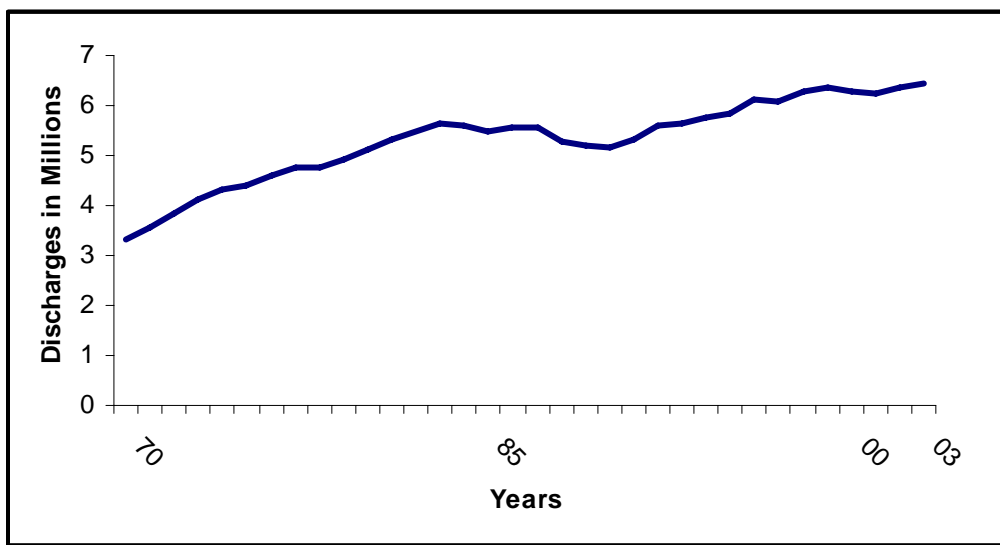
Hospital Discharges for Cardiovascular Diseases — Statistics

- In 2003, cardiovascular diseases (ICD/9 codes 390-459) ranked first among all disease categories in numbers of discharges* (6,434,000) from short-stay hospitals.

* Hospital discharges include people discharged alive and dead.

Hospital Discharges With Cardiovascular Disease as the First Listed Diagnosis

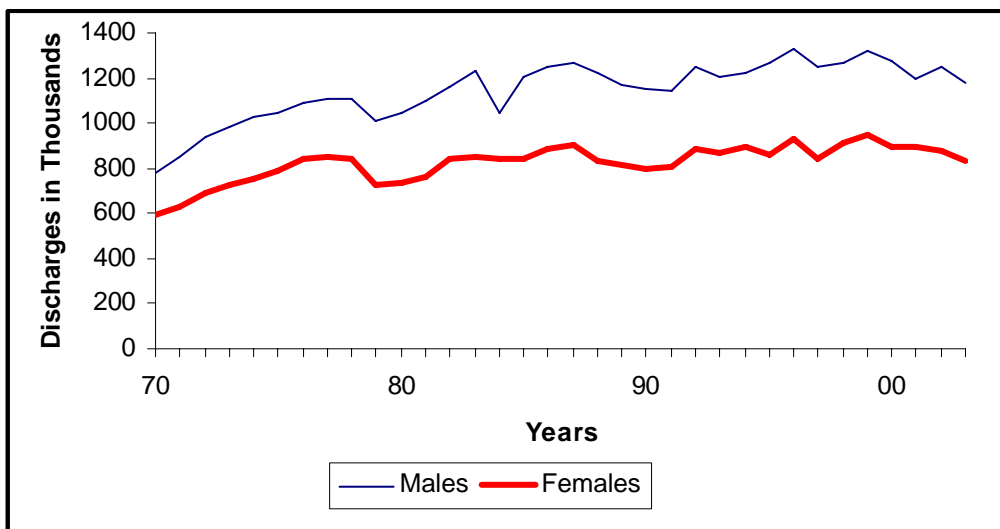
United States: 1979-2003



Source: National Hospital Discharge Survey, CDC/NCHS

Hospital Discharges With Coronary Heart Disease as the First Listed Diagnosis by Sex

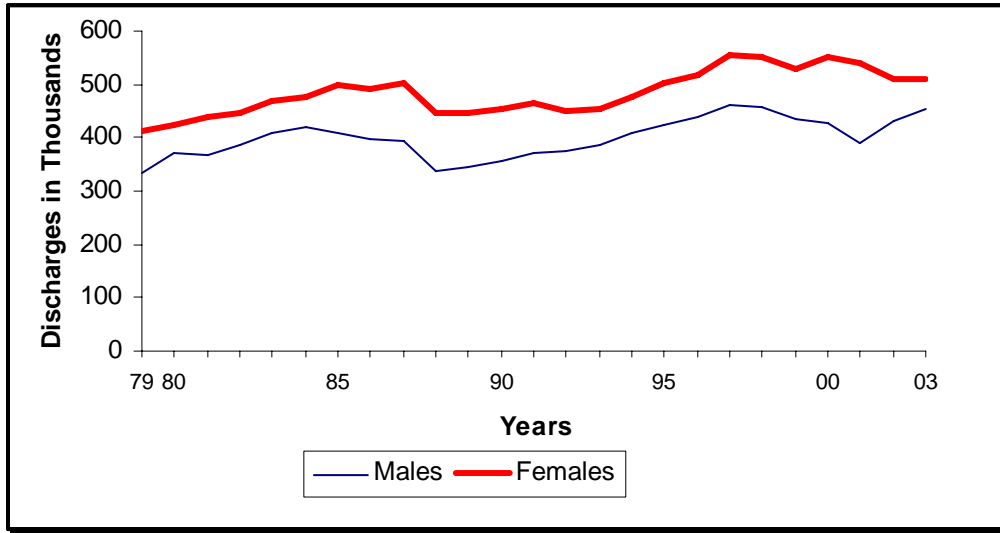
United States: 1970-2003



Source: National Hospital Discharge Survey, CDC/NCHS

Hospital Discharges With Stroke as the First Listed Diagnosis by Sex

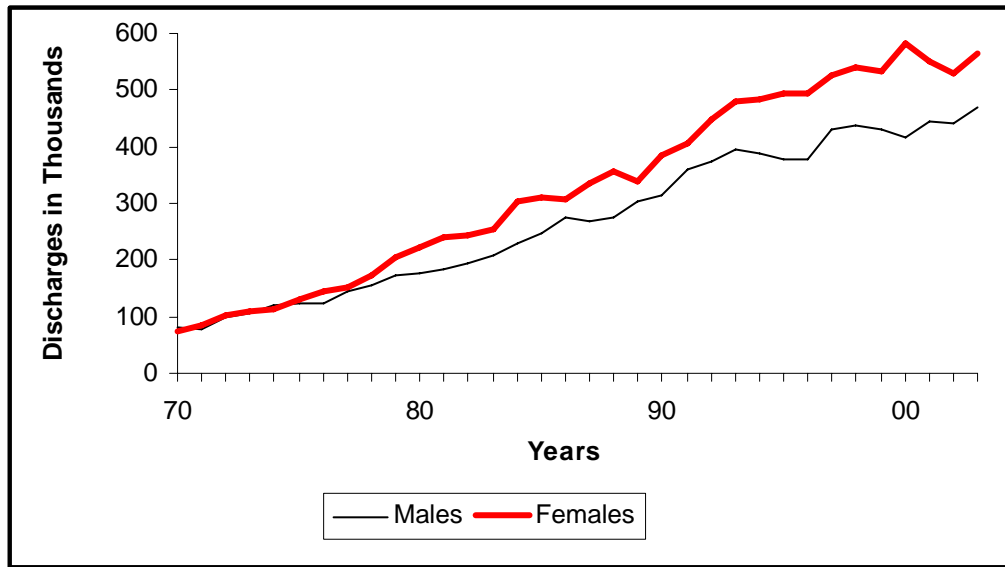
United States: 1979-2003



Source: National Hospital Discharge Survey, CDC/NCHS

Hospital Discharges With Heart Failure as the First Listed Diagnosis by Sex

United States: 1970-2003



Source: National Hospital Discharge Survey, CDC/NCHS

Source Footnote

CDC/NCHS – Centers for Disease Control and Prevention/National Center for Health Statistics and the American Heart Association