

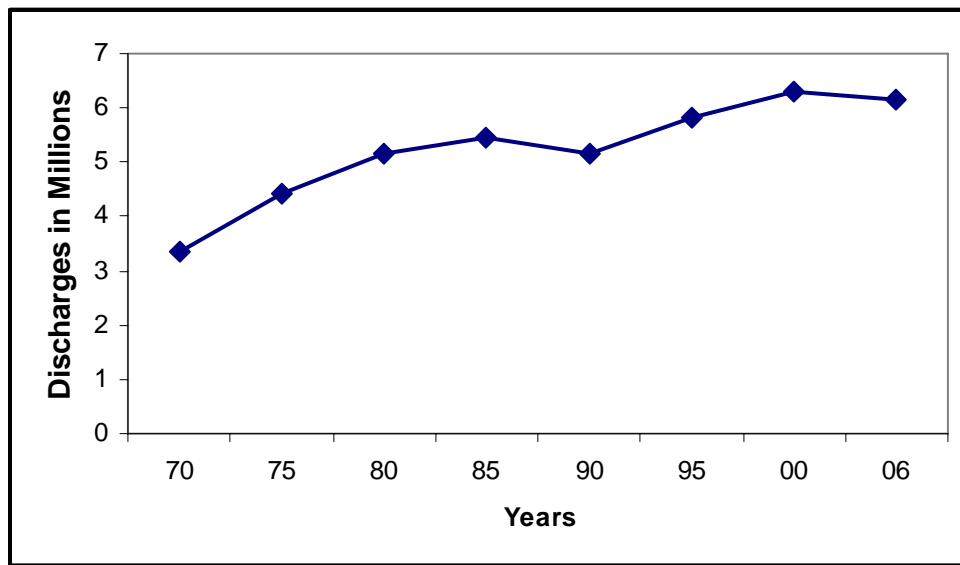
Statistical Fact Sheet — Miscellaneous 2009 Update

Hospital Discharges for Cardiovascular Diseases — Statistics

- In 2006, cardiovascular diseases (ICD/9 codes 390-459) ranked first among all disease categories in numbers of discharges* (7,015,000) from short-stay hospitals.
*Hospital discharges include people discharged alive, dead and status unknown.

Hospital Discharges With Cardiovascular Disease as the First Listed Diagnosis

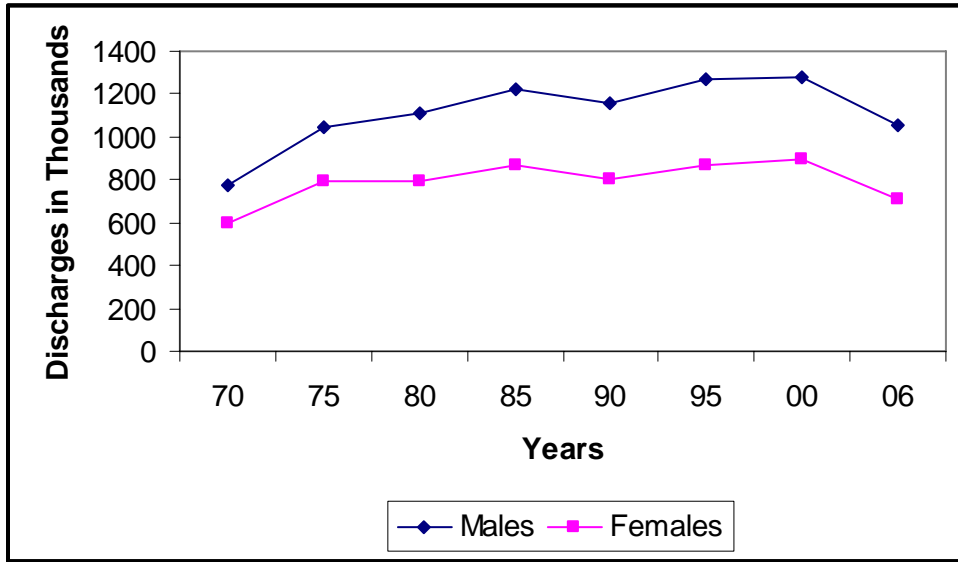
United States: 1979–2006



Source: National Hospital Discharge Survey, NCHS

Hospital Discharges With Coronary Heart Disease as the First Listed Diagnosis by Sex

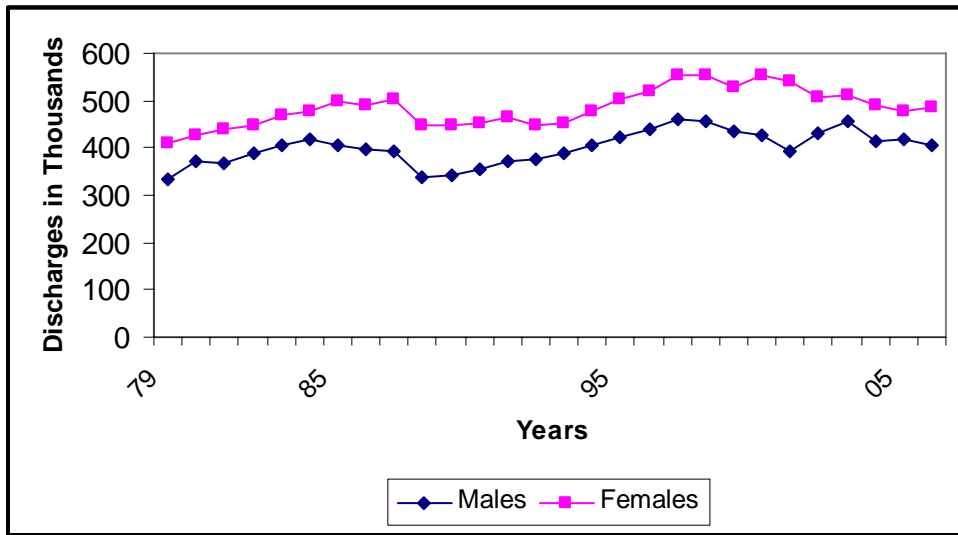
United States: 1970–2006



Source: National Hospital Discharge Survey, NCHS

Hospital Discharges With Stroke as the First Listed Diagnosis by Sex

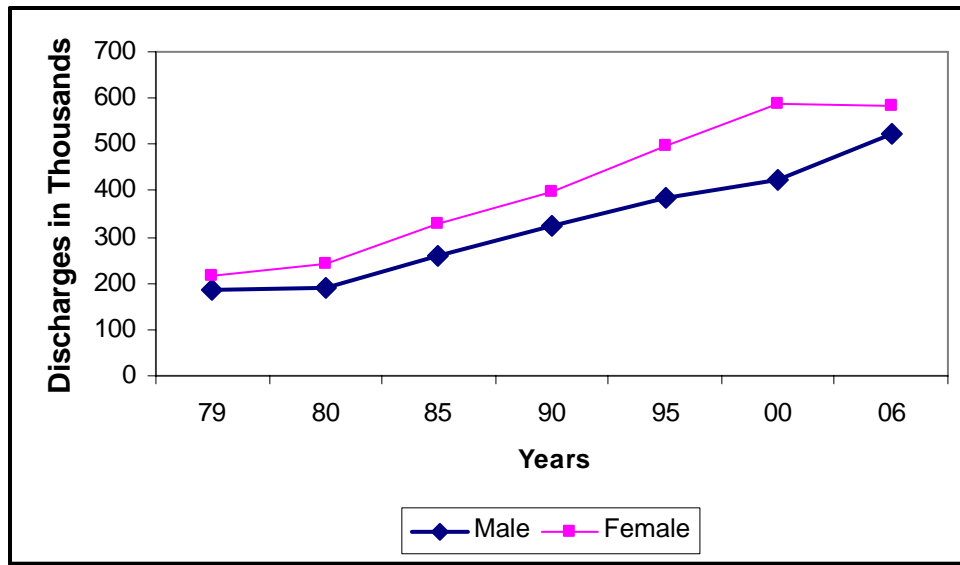
United States: 1979–2006



Source: National Hospital Discharge Survey, NCHS

Hospital Discharges With Heart Failure as the First Listed Diagnosis by Sex

United States: 1970–2006



Source: National Hospital Discharge Survey, NCHS

Abbreviation Used:

NCHS – National Center for Health Statistics

For additional information, charts, and tables see the Heart Disease and Stroke Statistics – 2009 Update, published in Circulation and available on our Web site.